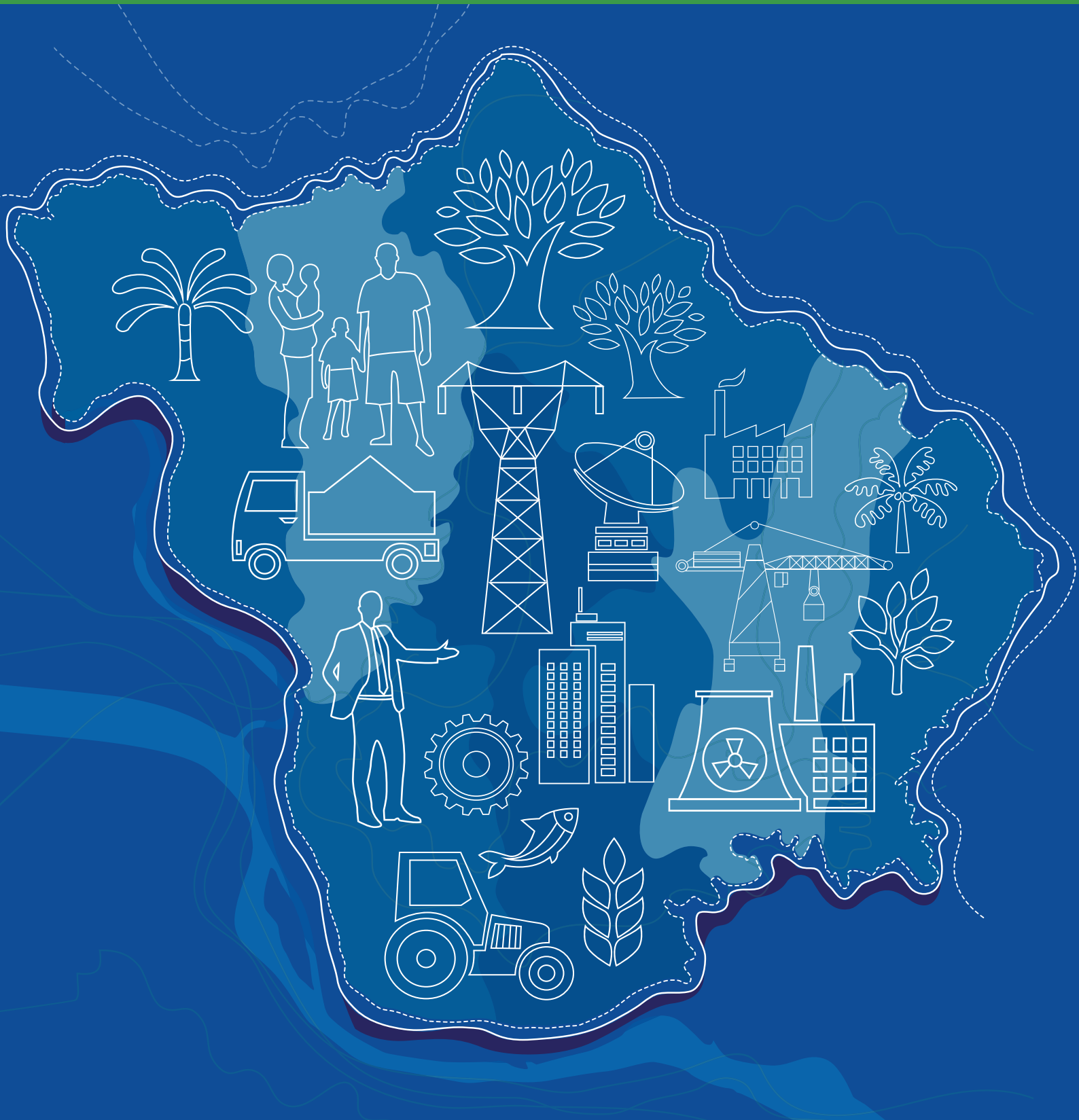


VINH PHUC

Hospitality and Prosperity





CONTENTS

01 VINH PHUC, ADVANTAGES
AND DIFFERENCES

04

02 GENERAL INFORMATION IN 2015

06

03 ADMINISTRATION

07

04 LABOUR, EDUCATION, AND
TRAINING

08

05 CULTURE

09

06 SPORT

11

07 TOURISM

12

08 LIVING CONDITIONS

13



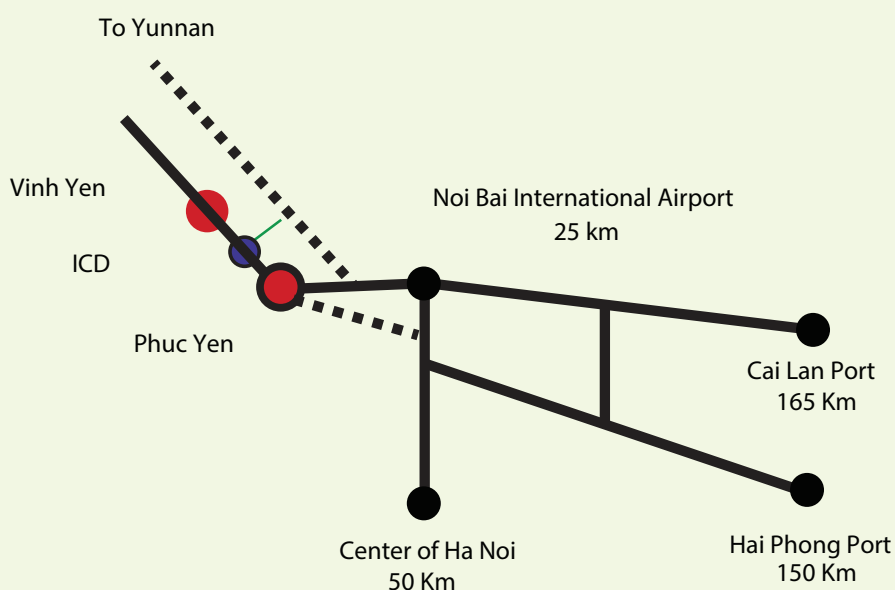
09	ECONOMY	14	13	LIST OF PRIORITIZED PROJECTS CALLING FOR INVESTMENT	18
10	TARGETS SPECIFIED IN MID-TERM PLAN (2016-2020)	16	14	INVESTMENT SUPPORT	19
11	VISION FOR THE FUTURE	17	15	INDUSTRIAL PARKS	20
12	PRIORITIZED SECTORS CALLING FOR INVESTMENT	18	16	DESTINATIONS IN VINH PHUC	24

VINH PHUC, ADVANTAGES AND DIFFERENCES

- ✚ Strongest commitment to support investors from the provincial leaders ;
- ✚ Open processing of administrative procedures under one-stop service, communication in different languages: English, Japanese, Korean, Chinese and Vietnamese;
- ✚ Convenient geographical location and transportation; a comprehensive and high grade of road, railway, waterway network; close to Noi Bai international Airport;
- ✚ Temperate climate, good geological structure without floods or earthquakes;
- ✚ The center for automobile and motorcycle industry in the North of Vietnam;
- ✚ Specialized agency for works of compensation and land clearance to create a land pool available to investors; available standard factories for lease;
- ✚ Abundant of tourism places with numerous famous cultural and historical places;
- ✚ Approved comprehensive and integrated master plan for sustainable development;
- ✚ Young population structure, plentiful labour force, high rate of trained labour forces;
- ✚ Benefited from infrastructural projects financed by World Bank (WB), Asian Development Bank (ADB) and Japan International Cooperation Agency.



GEOLOGICAL ADVANTAGES ▼



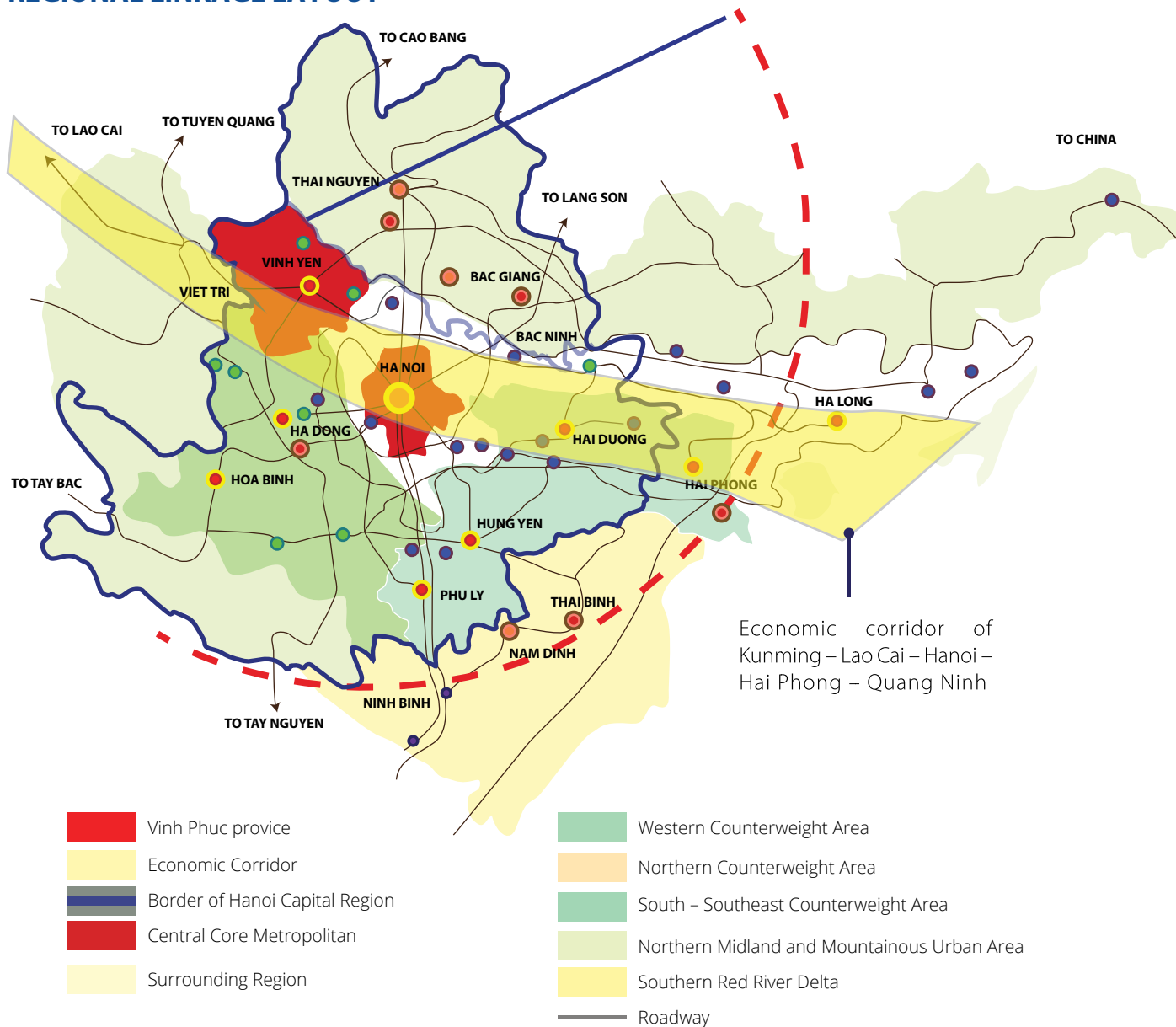
▼ REGIONAL LINKAGE MAP



GENERAL INFORMATION IN 2015



REGIONAL LINKAGE LAYOUT



- Vinh Phuc province has 1 city (Vinh Yen), 1 district-level-town (Phuc Yen) and 7 districts.
- Head office of Provincial People's Committee: No.38- 40, Nguyen Trai road, Dong Da ward, Vinh Yen city, Vinh Phuc province.

URBAN DEVELOPMENT PLANNING MAP OF VINH PHUC PROVINCE BY 2020



A corner of Vinh Yen City Center

LABOR, EDUCATION, AND TRAINING

Accounting for 59.6% of the total population, the workforce of the province are young, eager to learn new things, and have good work ethics.

There are 4 universities and a number of international universities applying for investment procedure; more will be coming from Hanoi capital.

- Around 35,000 students graduate from high schools each year. 5% of the graduates enter universities and the rest study in 48 different colleges, vocational and training schools in the province or other nearby cities, provinces.

- Thousands of engineers and trainees return from Japan, Korea, and Taiwan annually.
- In addition, thanks to location advantages, industrial parks in Vinh Phuc are the destinations for workers from neighbouring provinces, such as: Phu Tho, Tuyen Quang, Yen Bai, Ha Giang and Lao Cai.



Vinh Phuc province possesses a number of national assorted historical relics for tourism and entertainment, for instance: Tay Thien festival cultural Center; Tam Dao mountain resort with the height of nearly 1,000 m above sea level in the 34,995ha-primary forest; Dong Dau archaeological vestige; Binh Son ancient tower and handicraft villages (Ly Nhan forging village, Bich Chu carpentry village) for tourism; Dai Lai lake and others for fishing and week-end vacation.

There are 8 ethnic groups in the province. The Kinh is the major group which accounts for over 95% of total population, and the remaining 5% are ethnic minorities. Each ethnic minority has its own unique custom and culture.

In the countryside, there are traditional fairs where local people do not only exchange goods but also culture. The traditional market is one of tourism products of Vinh Phuc province.

Ancient Viet people appeared in Vinh Phuc area since the Stone Age. Dong Dau is the largest archaeological vestige, with the most cultural layer and plenty of relics in Vietnam.

Vinh Phuc province not only bears a charming national cultural character but well-known by abundant of traditional cuisines and drinks, such as: Tam Dao chayote, fermented fish, snake of Vinh Son, clove fish from Vac lake, Banh Hon Hoi Hop, Huong Canh porridge, Raw fish from Vac Lake, Tay Dinh Alkaline water zong, Tu Yen green-lentil cake, Tam Dao caterpillar liquor, black sticky rice, rice cracker, minced pork roll, fermented pork roll, etc., and many other fast-serving special cuisines with competitive price.



Tay Thien Festival Cultural Center



Traditional ceramic products



Traditional annual festival with folk games



Provincial Gymnasium

- *Multi-purpose gymnasium, hosted badminton and shuttlecock in SEAGAME, and many international Men and Women volleyball cups;*
- *Modern Square Theatre - venue for cultural and political events of the province.*
- *Sport Complex Center is under construction.*



Vinh Phuc Theatre



Vinh Phuc Sport Complex

TOURISM

- Tam Dao Recreation area is 1,000m above the sea level (highest peak of 1,542m), surrounded by primary forest with precious and rare animals and plants;
- There are two 18- hole golf courses in Vinh Yen, Tam Dao and one 36-hole golf course in Dai Lai where hosted many national and international golf cup by Vietnamese Golf Association;
- Eco- tourism at large lakes, such as: Van Truc, Xa Huong, Dai Lai, Dam Vac;
- Tay Thien festival cultural Center;
- Traditional handicraft villages: Huong Canh ceramic village, Ly Nhan forging village, Bich Chu carpentry village, Tho Tang trading village, etc.



Binh Son Tower – National Exceptional Relic



Tay Thien - National Exceptional Relic



Tay Thien Truc Lam Zen Monastery



Vac Lake Golf Course



Tam Dao Golf Course and Resort



Tay Thien Cable Car



Tam Dao Resort Area



Bamboo Restaurant – Flamingo Dai Lai Resort



Vinh Phuc Polyclinic



Big C Supermarket

LIVING CONDITIONS

Vinh Phuc has many advantages as it is located in midland region, with clean and fresh air. The annual average temperature is from 23.5°C to 25°C. Infrastructure for living is equipped adequately:

- Standard villa, housing system;
- 4-star and 3-star hotels ready to serve local and foreigners (Song Hong Thu Do, Tam Dao Belvedere resort, Tam Dao Star, Mela, Huong Rung Hotel, etc.);
- 5-star resorts (Tam Dao Golf & Resort, Flamingo Dai Lai resort, Heron lake golf course & resort, Dai Lai resort, FLC resort, etc.);
- Besides, high quality services are ready to serve in Hanoi capital after 30 minutes of travelling from center of Vinh Phuc;
- Japanese, Korean, Chinese, European restaurants available;
- There are many shopping centers, such as: Big C Vinh Phuc supermarket, Co-op Mart Vinh Yen, HC Home Center, Vinh Yen Media Mart, etc;
- Modernized hospitals and healthcare centers;
- Good security and order;
- Advanced telecommunication infrastructure with broadband transmission, optical cable, and 3G services.



Toyota Vietnam

ECONOMY

Average annual economic growth rate in 19 years (1997- 2015) is 14.4 %

14.4%
per year

INDUSTRY SECTOR

1 Proportion of industry and construction to GRDP in 2015: **62.12%**

2 Main products:

- FDI sector:

Automobiles: Toyota, Honda (Japan), Daewoo Bus (South Korea);

Motorbikes: Honda, Piaggio (Italia); textile and garment products: Shinwon, Vina Korea (South Korea);

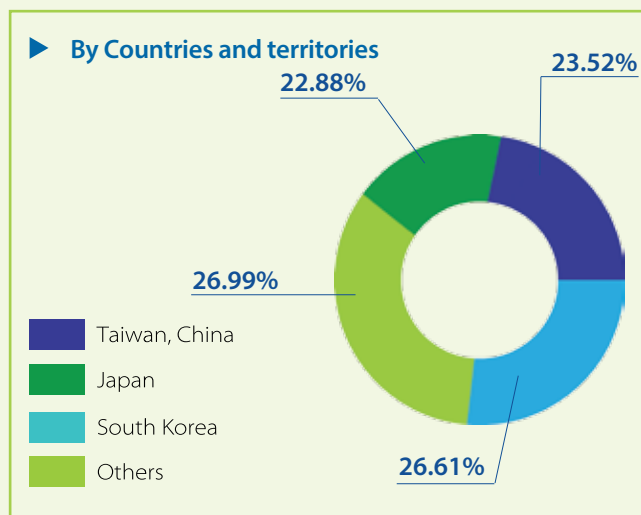
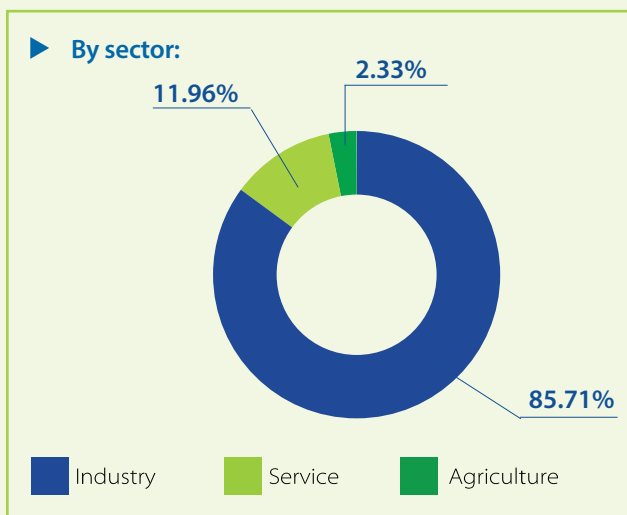
Electronic products: Patron Vina, Heasung Vina, Bangjoo, Jahwa, Cammsys, Sindoh (South Korea); Constructional material: Prime Group (Thailand).

- - DDI sector: fine art products (from wood, stone), silk, tea, etc.

3 Export turnover in 2015: **USD 1,413 million.**

FDI STRUCTURE CHART IN VINH PHUC PROVINCE (BY JUNE 2016)

Compare by registered investment





Honda Vietnam

MAJOR FDI PROJECTS IN VINH PHUC PROVINCE

 HONDA The Power of Dreams Honda Vietnam	 TOYOTA Toyota Vietnam	 Sumitomo Japan	 PIAGGIO VIETNAM CO., LTD Piaggio Vietnam	 COMPAL Compal Vietnam	 FOXCONN The Art of More Foxconn Vietnam
 VPIC 1 VPIC 1	 TOYOTA BOSHOKU Toyota Boshoku Hanoi	 Tungaloy Tungaloy Vietnam	 NISSIN Nissin Vietnam	 VIETNAM DAEWOO BUS Vietnam Daewoo Bus	
 NIPPON PAINT Nippon Paint Vinh Phuc	 HT Toyota Hiroshima	 VINA KOREA Vina Korea	 JAPFA Japfa Comfeed	 EXEDY EXEDY Vietnam Co., Ltd	 KMK Kohsei Multipack
 Dezen Dezen	 KINGLEY Kingley Rubber	 WOONGJIN Development Co., Ltd Woong Jin Vina	 TOYO Toyo Techno	 Vina CPK Vina CPK	 MEISEI Meisei Vietnam
 SEOK JUNG Seokjung Vina	 JIN SUNG Machinery Co., Ltd. Jin Sung Vietnam	 MD FLEX MD Flex Vina	 ShinWon ShinWon Vietnam	 KD GROUP KD Heat Technology Vietnam	 KUMNAM PRECISION Kumnam
 NTS VINA NTS Vina	 K-SOURCE K-Source Hanoi	 CABLE SH VINA SH Vina	 HIROTA Hirota	 HAOHSING Haohsing	 Haesung Optics Haesung Vina
 POWERLOGICS Powerlogics	 MIDORI Midori Apparel Vietnam	 YOOWON Yoowon	 SINDOH Sindoh	 GHS INDUSTRIAL RESOURCES GHS	 HJC HJC Vina
 SUYIN GROUP Suyin	 SUNSCO Sun Steel	 HEUNGWOO Heungwoo Vina	 STRONG-WAY Strong-way	 JSC FOSHAN Foshan	 THK THK Vietnam
 MINDA Minda Vietnam	 JAHWA Jahwa Vina	 JHEN DA INDUSTRY Jhen Da Industry	 THINK Think Vietnam	 CO-WIN Fasteners Hanoi	
 DAEWOO INTERNATIONAL Daewoo Apparel Vietnam	 TAL GROUP Hong Kong	 FLC GROUP FLC GROUP	 SUN GROUP SUN GROUP	 VINGROUP VINGROUP	 BITECCO BITECCO
 PRIME Thailand	 BANGJOO Bangjoo	 CAMMSYS Cammsys	 KINDERWORLD Kinderworld	 de heus de heus	 LS COMMUNICATION LS Communication Vina

SERVICES SECTOR

- ① Proportion of services to GRDP in 2015: **28.11%**
- ② Available service: hotel, restaurants, transportation, communication, finance and banking, gasoline supply, power and water supply.... has been providing satisfactory to business and living activities.



AGRICULTURE – FORESTRY – FISHERY SECTOR

- ① Contribution of agriculture- forestry – fishery to GRDP in 2015: **9.77%**
- ② Main products
 - Agriculture
 - + Rice, corn, sweet potato;
 - + Vegetable: cabbage, broccoli, onions, etc.;
 - + Fruits: banana, litchi, pomelo;
 - + Breeding: livestock and poultry;
 - Forestry: wood, bamboo, bamboo shoot, mushroom;
 - Aquaculture: Freshwater fishes and fishery.



TARGETS SPECIFIED IN MIDTERM PLAN (2016- 2020)

DEVELOPMENT PLAN OF 2016-2020 PERIOD AND VISION TO 2030:

Overall objective: "To further the works of industrialization and modernization; exploit and use resources effectively for a rapid and sustainable development. To enhance the economy's competitiveness and quality; innovate the growth model towards an efficient combination of intensive and extensive development in which intensive development is specially focused on. To strive for a higher economic growth than that of 5 years ago, and become a center of industry and tourism in the region and the country; focus on agricultural restructuring in association with rural labors job-changing; quickly complete new rural areas program; control and limit environmental pollutions. To ensure the coherence between economic development and social security; improve citizens' material and spiritual living. To strengthen national defense, ensure political security, social order and safety. Striving to basically complete the innovative urban infrastructure framework by 2020 for becoming a city in 2020s".

Key development targets

- The average GRDP growth rate (constant price 2010) reaches 7.0 - 7.5% per annum, of which: construction-industry sector increases 7.0 - 7.5% per annum; service sector increases 10.5 - 11.0% per annum; agricultural, forestry and fishing sectors rise 3.5- 4.0% per annum;
- Economic structure in 2020: construction-industry: 61.5%; services: 31.4%; agro-forestry and fishery: 7.1%;
- GRDP rate (at current price) by 2020 is about 1.5-2 times higher than 2015.
- GRDP per capita (at current price) reaches about VND 110 million, equivalent to \$4,800-\$5,000;
- Total investment capital (both public and private) accounts for 25-30% of GRDP value (at current price);
- Export turnover is expected to reach \$3.5 billion in 2020.
- Attract more \$1.3-1.5 billion from FDI projects;
- The proportion of trained workers is 76% including 30-35% trained workers being certified.

VINH PHUC CITY MASTER PLAN TO 2030

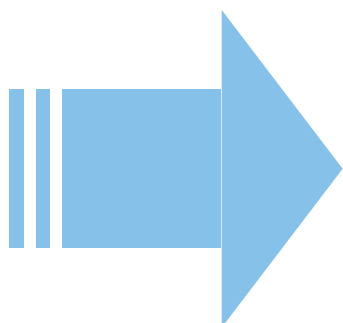
Vinh Phuc city master plan to 2030

- Vinh Phuc city become grade 1 urban, a core city of Vietnam Northern economic zone;
- Planned on a total area of 318.6km² with population of over 1 million people, 735,000 of which are labors;
- Being one of the biggest economic center of Hanoi Capital region and the nation with main products: industry, services, trading, training – science and tourism – resort,
- Being a center for culture exchange, transportation link of Hanoi Capital region and Vietnam Northern key economic region.

MAP OF VINH PHUC CITY DEVELOPMENT BY 2030



PRIORITIZED SECTORS CALLING FOR INVESTMENT



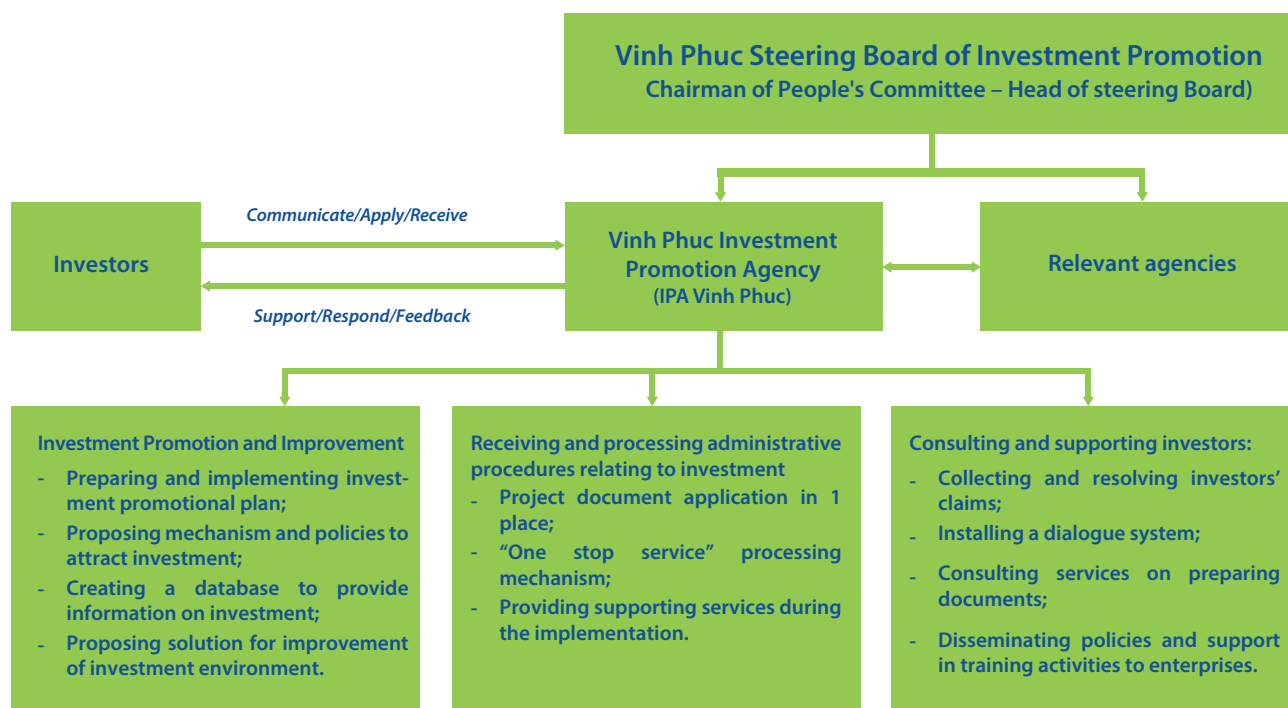
- Machinery, manufacture and assemble sectors of automobile, motorbike and supporting industry for automobile, motorbike manufacture and assembly;
- Electronic and telecommunication industry and supporting industry for electronics and telecommunication industry;
- Manufacture sectors of new and lightweight materials;
- Infrastructure development, operation for industrial park;
- Logistic;
- Training and education; good quality infrastructure of university, vocational school, high school, preschool;
- Health care facilities and health services: hospitals, sanatorium, etc...

LIST OF SECTORS CALLING FOR INVESTMENT

Industrial development
Machinery, manufacture and assembly sectors of automobile, motorbike and supporting industry for automobile, motorbike manufacture and assembly;
Electronics and telecommunication industry and supporting industry for electronics and telecommunication industry;
Manufacture sectors of new and lightweight material;
Biological technology, agriculture – forestry- fisheries processing and foodstuff processing industry.
Agricultural development
Vegetables, flowers, hi-tech fruit trees associated with processing facilities;
Dairy, high quality pig meat associated with processing facilities.
Service development
Logistic;
Supermarket, hotel and restaurant;
Resort and luxury entertainment area;
Training and education: good quality infrastructure of university, vocational school, high school, kinder- garten school;
Health care facilities and health services: hospital, sanatorium, etc.
Social- economic infrastructure development
Infrastructure development, operation for industrial park;
Production and distribution of water; urban waste drainage and treatment systems;
Industrial waste and domestic waste treatment, etc.

INVESTMENT SUPPORT

SUPPORTING PROCESS ▼



CONTACT AGENCY FOR INVESTMENT PROMOTION AND SUPPORT ▼

Vinh Phuc Investment Promotion Agency (IPA Vinh Phuc)

Address: Headquarter of Provincial People's Council and People Committee
No 38-40 Nguyen Trai Street, Dong Da Ward, Vinh Yen City, Vinh Phuc province, Vietnam.

Tel: +84 211 3616 618 – Fax: +84 211 3616 018

Website: ipavinhphuc.vn – Email: ipa@ipavinhphuc.vn



Flamingo Eco Resort, Dai Lai

INDUSTRY PARKS

GENERAL INFORMATION

IPs in Vinh Phuc province are located in midland region, 10m above the river level and 15-20m above the sea level, therefore there is no flood nor land sliding. Furthermore the stable geologic structure of the region enables the installation of heavy and precise machines.

Security and environment of the surrounding area of the IPs is good, easily to recruit workers.

The existing IPs and to-be-established one are close to arterial roads, railway stations and close to five interchanges of Noi Bai - Lao Cai Express Way (to Kunming – China), which was completed and operated since September 2014. All roads are not limited by load factor or means of vehicle.

Water supply source: supplied by water treatment plants with a total capacity of 56,000m³/day. Another water treatment plant with a capacity of 50,000m³/day, funded by Japanese ODA is under construction in Song Lo district. Preparing to build another with a capacity of 500,000 – 1,000,000m³/day in Song Lo district. So water volume can be supplied as much as the manufacturer's demands. The water price is regulated by the local government. Water payment shall be made at the manufacturer's company. Related installation services are available as requested.

Power Supply: power supply reliability N-1 (total load capacity of the province: 2,900 MW), the master plan for power gridline development includes:

- **220kV, 110kV grid lines:** are designed in loop circuit or double circuit, each substation is connected by two wires to assure the reliability and quality in normal working mode and single failure as prescribed. Transformer: using transformer with a capacity of 125 MVA and 250 MVA for 220kV output; 25MVA, 40MVA, and 63MVA for 110kV output.
- **Medium voltage distribution:** using 35kV and 22kV distribution system. Distribution of 22kV is standardized for a medium voltage development in the province. Developing 22kV distribution in places which is ready or to-be-ready with 22kV source: Vinh Yen, Phuc Yen, Binh Xuyen, Song Lo, Vinh Tuong, Tam Duong, and Yen Lac. 10kV and 6kV will be upgraded to 22kV. In places with low load capacity density and remote area, 35kV distribution system will be developed.
- **Low voltage distribution:** using aerial bundle cable (ABC) with 4 heavy duty aluminum cores, arterial diameter $\geq 95\text{mm}^2$, supply radius $\leq 300\text{m}$; suburban areas and rural areas: using aerial wire, arterial diameter $\geq 70\text{mm}^2$, supply radius $\leq 800\text{m}$.

In each Industrial Park, there is one 22kV/0.4kV substation. So, the companies can use power upon their demand. The price is regulated by the Central Government. Payment shall be made at the manufacturer's company. Related installation services are available as requested.

Telecommunication: high speed and broadband optical cable or wireless telecommunication is available. The prices are defined by the Central Government. Payment shall be made at the manufacturer's company. Related installation services are available as requested.

Financial and banking (ATM) services, customs and tax registration are available at the IPs
(Prices and fees shall be included in the contract signed by the IP developer and the investor).

EXISTING AND PLANNED INDUSTRIAL PARKS BY 2020

NO	Name of industrial park	Total area (ha)	Area for industrial use (ha)
A	EXISTING INDUSTRIAL PARKS		
1	Khai Quang	216.24	162.29
2	Binh Xuyen	287.70	209.83
3	Kim Hoa	50	45
4	Ba Thien - A	77.87	62.85
	Ba Thien - B	247.84	138.98
5	Binh Xuyen II (Phase 1)	42.21	31.65
	Binh Xuyen II (Phase 2)	137.79	82.674
6	Ba Thien II	308	212.4
7	Phuc Yen	148.6	98.55
8	Tam Duong II - A	176.53	134.57
	Tam Duong II - B	185.6	120
	Tam Duong II - C	387.87	232.722
9	Chan Hung	129.75	90.4
10	Son Loi	264.52	189.08
11	Thang Long Vinh Phuc	213	170.4
12	Song Lo I	200	120
13	Tam Duong I	700	420
B	PLANNED INDUSTRIAL PARKS BY 2020		
14	Lap Thach I	150	90
15	Lap Thach II	250	150
16	Song Lo II	180	116.65
17	Thai Hoa - Lien Son - Lien Hoa	600	360
18	Vinh Thinh	270	162
19	Nam Binh Xuyen	304	182.4
Total:		5,527.52	3,582.45





EXISTING INDUSTRIAL PARKS (IP)

Khai Quang Industrial park



IP Developer: Vinh Phuc Infrastructure Development JSC.

- Address: Khai Quang ward, Vinh Yen city, Vinh Phuc province

- Tel: +84 211 3 721 797 Fax: +84 211 3 845 944

Website: www.vpid.com.vn; Email: idv@vpid.vn

- Location: In Vinh Yen city, close to Highway 2A, 2 km away from Ha Noi – Lao Cai railway station, 50 km from Hanoi Capital's centre, 25 km from Noi Bai International Airport, 150 Km from Cai Lan Port;

- Area: 216.24 ha; industrial land area: 162,29 ha including 10 ha for construction of standard factories for rent.

- Projects calling for investment: manufacturing of electric & electronic components, molds for metal & non-metal products.

- Major existing enterprises in IP: Partron Vina, Daewoo Bus, Vina Korea, Shinwon Ebenezer, Shindoh Vina, Jahwa Vina, etc (Korea); Exedy, Meisei Vietnam, Hirota Precision, KD Heat Technology, etc (Japan); VPIC1, Dezen, Lam Vien, Sunhua, etc (Taiwan).

Binh Xuyen Industrial Park



- IP Developer: An Thinh Vinh Phuc Construction Investment Co.,Ltd.

- Establishment time: December, 2004

- Address: Binh Xuyen IP, Binh Xuyen district, Vinh Phuc province.

- Tel: +84 4 3 8473.780/ +84 211 3 596.999;

Fax: +84 4 3 8473.662/ +84 211 3 396.888

- Location: in Binh Xuyen District, close to National Highway No.2 (Noi Bai - Lao Cai route); 18km from Noi Bai international airport, 45 km from Hanoi Capital's centre, 160 km from Cai Lan Port (Quang Ninh), adjacent to Hanoi – Lao Cai – Con Minh, China railway route, 2 km from railway station.

- Areas: 287.7 ha including industry land areas of 209.83 ha.

- Projects calling for investment : manufacturing of car & motorcycle accessories, mechanic engineering, electric equipments , chemicals , new building materials, etc.

- Major existing enterprises in IP: Piaggio (Italy), Kohsei Multipack, Sunsteel (Japan), Hannam (Korea), De Heus (Netherlands), etc.

Kim Hoa Industrial Park



- IP Developer: Vietnam urban and industrial zone development investment corporation (IDICO)

- Address: 151 Nguyen Dinh Chieu, District 3, Ho Chi Minh city.

- Tel: +84 8 3 8438883; Fax: +84 8 3 9312705; Email: idico@hcm.fpt.vn

- Location: in Phuc Yen Town, close to highway 2A, 10km from Noi Bai International Airport, 35 km from Hanoi Capital's centre, 152 Km from Cai Lan Port (Quang Ninh), close to Ha Noi – Lao Cai – Kunming (China) railway route, 1km from Phuc Yen station.

- Area: 50 ha (industrial area: 45 ha; occupancy rate: 100%)

- Major existing enterprise in IP: Honda Vietnam.

Ba Thien Industrial Park - A zone



- IP Developer: Vinh Phuc Industrial Zones Management Board.
- Establishment year: 2013
- Address: 38-40 Nguyen Trai street, Dong Da ward, Vinh Yen City, Vinh Phuc province;
- Tel: + 84 211 3 843403; Fax: +84 211 3 843407
- Area: 77.87 ha including industrial land area of 64 ha
- Projects calling for investment: manufacturing of electronic components, office equipments, mobile phones, etc.
- Major existing enterprises in IP: Vietnam Dongyang Electronics, Vietnam Joo Bang Electronics, Vietnam Cammsys, Vietnam Deaduck (South Korea), etc.

Binh Xuyen II Industrial Park – A zone



- IP Developer: Fu Chuan Co., Ltd
- Establishment year: November 2014
- Address: Binh Xuyen II Industrial park, Binh Xuyen district, Vinh Phuc province.
- Tel/Fax: +84 211 3 888 608
- Location: in Binh Xuyen District, 2 km from Noi Bai – Lao Cai highway , 20km from Noi Bai Airport, 50 km from Hanoi Capital's centre, 165 km from Cai Lan Port (Quang Ninh), 4 km from railway station.
- Areas: 42.21 ha including industrial land area of 31.65 ha.
- Projects calling for investment: manufacturing of electronic components, office equipments, mobile phones, software, etc.
- Major existing enterprises in IP: Vina INM Co., Ltd (Seychelles Republic)

Ba Thien II Industrial Park



- IP Developer: VINA –CPK Joint stock Co., Ltd
- Establishment year: February 2009
- Address: in Ba Hien, Thien Ke, and Trung My communes, Binh Xuyen district, Vinh Phuc province.
- Tel: +84 211 3 899 007; Fax: +84 211 3 861 007
- Location: in Binh Xuyen District, 6 km from Noi Bai – Lao Cai highway, 20km from Noi Bai Airport, 45km from Hanoi Capital's centre, 170km from Cai Lan Port (Quang Ninh).
- Area: 308 hectares; industrial land area of 212.4 hectares including 50 hectares for construction of standard factories for rent with JICA's financing;
- Projects calling for investment: manufacturing of office equipments, cameras, printers, telecommunications equipments, software, etc.
- Major existing enterprises in IP: Vinh Phuc Nippon Paint Co., Ltd. (Japan), Vietnam Suzukaku (Japan); Vina Union, DST Vina, Sekonix Vina (South Korea), etc.

Tam Duong Industrial park - A zone



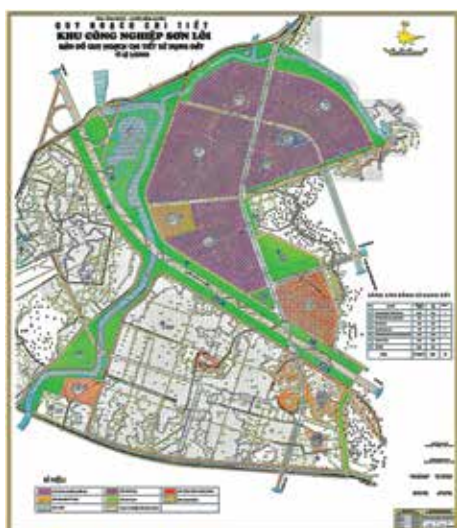
- IP Developer: Vitto-VP Co., Ltd
- Address: Lot 1, A Park, Tam Duong Industrial Park II, Kim Long commune, Tam Duong district, and Hop Chau, Ho Son, and Tam Quan communes, Tam Dao District, Vinh Phuc Province.
- Phone: +84 211 6 558863 - Fax: +84 211 6 253 482
- Location: Kim Long, Tam Quan, Hoang Hoa, Huong Dao communes and Hop Hoa commune-level town, Tam Duong district, Vinh Phuc province.
- Area: 176.53 ha including industrial land area of 134.57 ha.
- Projects calling for investment: mechanic engineering, mechanic processing, agricultural molds & machinery, electric, electronic and electro-refrigerational molds & accessories.

Tam Duong Industrial park - B zone



- IP Developer: FLC Group
- Headquarter address: 5th Floor of FLC Land Mark Tower, Le Duc Tho street, My Dinh 2 ward, South - Tu Liem district, Hanoi city.
- Tel: (84-4) 3771 1111; Fax: (84-4) 3724 5888
- Representative office in Vinh Phuc: 56 Ba Trieu Street, Lien Bao ward, Vinh Yen city, Vinh Phuc province. Tel: +84 211 6 256 338
- Location: in Tam Quan & Dai Dinh communes, Tam Dao and Dong Tinh & Hoang Hoa communes, Tam Duong district, Vinh Phuc province.
- Area: 185.6 ha including industrial land area of 120 ha.
- Projects calling for investment: mechanic engineering, mechanic processing, building materials, accessories, electric and electronic products, etc.

Son Loi Industrial Park



- IP Developer: An Thinh investment Co., Ltd.
- Tel: (+84) 211 596 999 / 4 3 8473.780; Fax: (+84) 211 596 888 / 4 3 8473.662
- Address: Huong Canh town, Son Loi commune, Tam Hop commune, and Ba Hien commune in Binh Xuyen district, Vinh Phuc province.
- Location: Closed to Noi Bai – Lao Cai Express way and provincial way 310B; closed to Hanoi – Lao Cai – Kunming (China) railway and newly planned railway; 16km from Noi Bai Airport, 43 km from Hanoi Capital's centre, 158 km from Cai Lan Port (Quang Ninh).
- Area: 264.52 hectares including industrial land area of 189.08 hectares.
- Projects calling for investment: manufacturing of transportation equipments, containers, mechanic engineering, electric equipments, metallic or non-metallic molds, large-sized lifting equipments, machinery for processing metals, etc.

Thang Long Industrial Park (Vinh Phuc)



- IP Developer: Thang Long Vinh Phuc Industrial Park Co., Ltd.
- Address: Thien ke and Tam Hop commune, Binh Xuyen district, Vinh Phuc province.
- Location: in Binh Xuyen district, 2km from Noi Bai - Lao Cai expressway, 20 km from Noi Bai international airport, 50 km from Ha Noi centre, 165 km from Cai Lan port (Quang Ninh), 4 km from the railway station.
- Area: 213 hectares including industrial land area of 170.4 hectares.
- Projects calling for investment: manufacturing of electronic components, office equipments, mobile phones, software, etc.

PLANNED INDUSTRIAL PARKS BY 2020; CALLING FOR INVESTMENT

Ba Thien Industrial Park - B zone

Area: 247.84 ha including industrial land area of 138.98 ha

- Address: Ba Thien Industrial park, Binh Xuyen district, Vinh Phuc province
- Location: in Binh Xuyen district, 5km from Noi Bai - Lao Cai highway, 23km from Noi Bai international airport, 53km from the centre of Hanoi capital, 168km from Cai Lan port (Quang Ninh);
- Projects calling for investment: manufacturing of electronic components, office equipment, mobile phones, etc.

South Binh Xuyen Industrial Park

Area: 304 ha, industrial land area of 182.4 ha

- Address: Dao Duc commune, Tam Phong commune, Binh Xuyen district, Vinh Phuc province
- Location: closed to National highway 2A (Ha noi – Lao Cai); 4km away from railway station; 18km from Noi Bai international airport, 45km from the centre of Hanoi capital, 150km from Cai Lan port (Quang Ninh);
- Projects calling for investment: manufacturing of spareparts, mechanics, cast, electric equipment, new construction materials.

Song Lo I Industrial Park

Area: 200 hectares including industrial land area of 120 hectares.

- Address: Duc Bac commune, Tu Yen commune, Dong Thinh commune, in Song Lo district, Vinh Phuc province.
- Location: closed to Trans-Asia Express way; 46km from Noi Bai international airport, 75 km from Hanoi Capital's centre, 192 km from Cai Lan Port (Quang Ninh).
- Projects calling for investment: mechanic engineering, mechanic processing, constructional materials, spareparts, electric and electronic products, etc.

Song Lo II Industrial Park

- Area: 180 ha including industrial land area of 116.65 ha.

- Address: Duc Bac commune, Tu Yen commune, Dong Thinh commune, in Song Lo district, Vinh Phuc province.
- Location: closed to Trans-Asia Express way (Hanoi – Lao Cai – Kunming Expressway (China)); 42km from Noi Bai international airport, 71 km from Hanoi Capital's centre, 188 km from Cai Lan Port (Quang Ninh).
- Projects calling for investment: mechanic engineering, precise mechanic, medical equipments, electronic products, etc.

Phuc Yen Industrial Park

- Area: 148,6 ha including industrial land area of 98.55 ha.

- Address: Nam Viem commune, Phuc Thang ward, Phuc Yen district-level town, Vinh Phuc province.
- Location: closed to Trans-Asia Express way (Hanoi – Lao Cai – Kunming Expressway (China)); 3km away from the railway station; 9km from Noi Bai international airport, 34 km from Hanoi Capital's centre, 151 km from Cai Lan Port (Quang Ninh).
- Projects calling for investment: aviation equipments, precise mechanic, optical equipments, medical equipment, electronics, spareparts, etc.

Lap Thach I Industrial Park

- Area: 150 ha including industrial land area of 90 ha.

- Address: Van Quan, Xuan Loi, Tien Lu, and Dinh Chu commune in Song Lo district, Vinh Phuc province.
- Location: closed to Trans-Asia Express way (Hanoi – Lao Cai – Kunming Expressway (China)); 41km from Noi Bai international airport, 70 km from Hanoi Capital's centre, 187 km from Cai Lan Port (Quang Ninh).
- Projects calling for investment: consumer good, agro-forestry and fishery processing, food, mechanic engineering, constructional materials, medical equipments, medicine.

Lap Thach II Industrial Park

- Area: 250 ha including industrial land area of 150 ha.
- Address: Cao Phong and Dong Thinh commune in Song Lo district, Vinh Phuc province.
- Location: 3km away from Trans-Asia Express way (Hanoi – Lao Cai – Kunming Expressway (China)); 44km from Noi Bai international airport, 73 km from Hanoi Capital's centre, 190 km from Cai Lan Port (Quang Ninh).
- Projects calling for investment: constructional materials, mechanic, spareparts, electronics, textile, shoes, medicine.

Thai Hoa – Lien Son – Lien Hoa Industrial Park

Area: 600 ha including industrial land area of 360 ha.

- Address: Bac Binh, Thai Hoa, Lien Son, Lien Hoa, and Tu Du in Song Lo district, Vinh Phuc province.
- Location: 11km away from Trans-Asia Express way (Hanoi – Lao Cai – Kunming Expressway (China)); 40km from Noi Bai international airport, 74 km from Hanoi Capital's centre, 181 km from Cai Lan Port (Quang Ninh).
- Projects calling for investment: constructional materials, agro-forestry and fishery processing, food, consumer good, textile, shoes.

Vinh Thinh Industrial Park

- Area: 270 ha including industrial land area of 162 ha.
- Address: Vinh Thinh and An Tuong commune, Vinh Tuong district, Vinh Phuc province.
- Location: Closed to ringroad 5 of Hanoi Capital region; 17km away from National way 2A (Hanoi – Lao Cai); 47km from Noi Bai international airport, 42 km from Hanoi Capital's centre.
- Projects calling for investment: hi-tech products, constructional materials, mechanic, machine, equipments.

PROJECT: INLAND CONTAINER DEPOT (ICD) AND RAILWAY STATION IN VINH PHUC



Location:

in Huong Canh commune-level town and Son Loi commune, Binh Xuyen Distric, located in the centre of industrial zones namely South-Binh Xuyen, Binh Xuyen, Son Loi, Binh Xuyen 2, Ba Thien, Ba Thien 2, Huong Canh industrial cluster, 18 km from Noi Bai International Airport, 150km from Cai Lan deep port (Quang Ninh), 140km from Hai Phong port, and 45km from Hanoi city.

Scale:

Phase 1 (2015-2020):

- Build a new railway station in Huong Canh by km 45+400 milestone to replace the existing one: the station and relevant infrastructure; 8 pairs of railway alongside the route, 7 dead-end pairs for relevant cargo transportation, connection roads.
- Build an inland container depot for loading, gathering and clearing cargos: 02 railway axes linking the depot to the station; 03 storages and 02 grounds for inland transportation; 04 grounds for gathering containers transshipping between the ICD and the station;

Phase 2: (after 2020):

- Expand the entire ICD.
- Build the 1.435m-width railway

LIST OF VINH PHUC'S PROJECTS CALLING FOR INVESTMENT IN 2016, VISION OF 2016-2020 PERIOD

Number of projects: 42

No	Project name	Investment location	Objective, scale of investment	Investment capital (expected)		Expected investment form	Estimated progress	Contact
				Million USD	Billion VND			
I Preferential list of key projects calling for investment								
1	Building drainage and sewage treatment facilities in Phuc Yen town	Phuc Yen town, Vinh Phuc	Drainage facility's length: 52.1 km (Reinforced concrete culvert: 46.2 km; box culvert: 5.9 km); Sewage treatment facility's length: 31.2 km (u.PVC or HDPE pipes: 25 km; HDPE pressure pipes: 6.2 km)	35		PPP, ODA	3-5 years	Phuc Yen town
2	Duc Bac water supply facility and its conduit network (Stage 1)	Duc Bac water supply facility and its conduit network (Stage 1)	Water supply facility's capacity: 150,000 cubic metres/day; Conduit network's length: 40 km running through Noi Bai - Lao Cai highway with a diameter of 600-1500mm		1,389.0	PPP, 100% FDI	3-5 years	Department of Construction
3	Complex of 5-star hotels and amusement park in Nam Viem commune, Phuc Yen town	Nam Viem commune, Phuc Yen town	Area: 25-30 ha with 500 rooms (standard: 450, luxury: 50) with series of Asean - European restaurants combined luxurious entertainment park meeting customers' diverse needs and providing logistics services for Noi Bai international airport	100		100% FDI	Calculated by investors	IPA Vinh Phuc, Department of Construction
4	The project for Van Truc lake and Bo Lac lake eco-tourism complex in Lap Thach and Song Lo districts	Van Truc commune, Lap Thach district; Dong Que commune, Song Lo district	Total area: 800 ha, of which Van Truc lake has an area of 172 ha, average depth is 7m and Bo Lac lake accounts for an area of 40 ha (Truc Lam Tue Duc buddhist monastery which got investment from Buddhist Association is not included in this project)	150		100% FDI	Calculated by investors	Department of Construction

No	Project name	Investment location	Objective, scale of investment	Investment capital (expected)		Expected investment form	Estimated progress	Contact
				Million USD	Billion VND			
I Preferential list of key projects calling for investment								
5	Urban and tourism development projects surrounding Sau Vo conditioning lake in	Binh Xuyen, Yen Lac districts and Vinh Yen City	Area: 2,900 ha (residential area: 1,070 ha; public service: 190 ha; water, green trees: 1,200 ha, transportation and other areas: 440 ha)	150		100% FDI	Calculated by investors	Department of Construction; Department of Planning and Investment
6	Vinh Phuc's along road - LRT internal railway	Vinh Yen city, Vinh Phuc	Length: 12 km with 23 stops (each stop's distance: 500-600m). LRT width: 9 m (02 LRT lanes: 7m; central reserve: 2m) for 46-meter road; LRT width: 7m (02 LRT lanes: 7m, no central reserve) for 36-meter road.	200		PPP or investors' suggested form	3-5 years	Department of Planning and Investment, Department of Transport
7	A sports complex and a training centre for Vinh Phuc athletes in Kim Long commune, Tam Duong district	Kim Long commune, Tam Duong district	Area: 51 ha with 3 major subdivisions (SUB) areas providing standard conditions for international and regional tournaments: SUB1 includes a stadium with a capacity of 20,000 spectators and a training area; SUB2 includes an indoor swimming pool and a sport hall; SUB 3 includes an at least 10-floor hotel with 150 rooms on an area of 6,300 m²	250		PPP or investors' suggested form/ as proposed by investors	3-5 years	IPA Vinh Phuc, Department of Construction
II List of industrial clusters' infrastructure construction								
Marketplace construction								
1	Tan Tien - Lung Hoa wholesale market of agricultural products	Tan Tien & Lung Hoa communes, Vinh Tuong district	Area: 188 ha, Infrastructure construction for business and running land site, commercial service and real estate		2,290.0	PPP	2016 - 2020	Department of Industry and Trade
2	Lap Thach market	Lap Thach town, Lap Thach district	Area: 1,5 ha, Infrastructure construction for business and running land site, commercial service and real estate		100.0	PPP	2016 - 2020	Department of Industry and Trade

No	Project name	Investment location	Objective, scale of investment	Investment capital (expected)		Expected investment form	Estimated progress	Contact
				Million USD	Billion VND			
II List of industrial clusters' infrastructure construction								
3	Tam Dao market	Tam Dao town, Tam Dao district	Area: 0,3- 0,5 ha, Infrastructure construction for business and running land site, commercial service and real estate		20.0	PPP	2016 - 2020	Department of Industry and Trade
4	Huong Canh market	Huong Canh town, Binh Xuyen district	Area: 1,13 ha, Infrastructure construction for business and running land site, commercial service and real estate		75.0	PPP	2016-2018	People's Committee of Binh Xuyen district
5	Vong market and its surrounding areas in Tuan Chinh commune, Vinh Tuong district	Tuan Chinh commune, Vinh Tuong district	Renovate and build technical and social infrastructures to meet local residents' housing and living needs; Area: 11.127 ha		132.17	PPP	2016-2020	People's Committee of Vinh Tuong district
List of industrial clusters' infrastructure construction								
1	Infrastructure construction and business in Dong Thinh industrial cluster	Dong Thinh commune, Song Lo district	- Construction area: 18.37 ha - Infrastructure construction and real estate business - Attract enterprises and households in supporting industry, textile, footwear and multisector industry		160.0	100% FDI	2016-2018	Department of Industry and Trade
2	Infrastructure construction for business in Tho Tang - Lung Hoa industrial cluster	Tho Tang commune level town and Lung Hoa commune, Vinh Tuong district	- Construction area: 35.98 ha - Infrastructure construction and real estate business - Encourage enterprises and households to operate in forest product processing, mixed and multisector		315.0	100% FDI	2017-2020	Department of Industry and Trade
3	Infrastructure construction for business in Xuan Hoa - Cao Minh industrial cluster	Xuan Hoa and Cao Minh wards, Phuc Yen town	- Construction area: 20 ha - Infrastructure construction and real estate business - Attract enterprises and households to operate in forest product processing, construction materials and multisector		175.0	100% FDI	2016-2018	Department of Industry and Trade

No	Project name	Investment location	Objective, scale of investment	Investment capital (expected)		Expected investment form	Estimated progress	Contact
				Million USD	Billion VND			
List of industrial clusters' infrastructure construction								
4	Infrastructure construction for business in Thai Hoa - Bac Binh industrial cluster	Thai Hoa and Bac Binh communes, Lap Thach district	- Construction area: 9 ha - Infrastructure construction and real estate business - Attract enterprises and households to operate in supporting industry, mechanics, textile, footwear and multisector		80.0	100% FDI	2018-2020	Department of Industry and Trade
5	Infrastructure construction for business in Viet Xuan industrial cluster	Viet Xuan commune, Vinh Tuong district	- Construction area: 10 ha - Infrastructure construction and real estate business - Attract enterprises and households to operate in mechanics, shipbuilding, construction materials and supporting industry		90.0	100% FDI	2016-2018	Department of Industry and Trade
6	Infrastructure construction for business in Minh Phuong industrial cluster	Yen Lac commune-level town and Minh Phuong commune, Yen Lac district	- Construction area: 23.9 ha - Infrastructure construction and real estate business - Attract enterprises and households to operate in forest product processing, mixed and multisector		210.0	100% FDI	2018-2020	Department of Industry and Trade, People's Committee of Yen Lac district
7	Infrastructure construction and business in Trung Nguyen industrial cluster	Yen Lac district, Vinh Phuc	Area: 40 ha		300.0	100% FDI	2016-2020	Department of Industry and Trade, People's Committee of Yen Lac district
8	Infrastructure construction for business in Tam Hong industrial cluster	Yen Lac district, Vinh Phuc	Area: 5 ha		30.0	100% FDI	2016-2020	Department of Industry and Trade, People's Committee of Yen Lac district
9	Infrastructure construction for business in Yen Phuong industrial cluster	Yen Lac district, Vinh Phuc	Area: 10 ha		50.0	100% FDI	2016-2020	Department of Industry and Trade, People's Committee of Yen Lac district
10	Yen Dong expanding industrial cluster	Yen Lac district, Vinh Phuc	Scale: 5 ha		30.0	100% FDI	2016-2020	Department of Industry and Trade, People's Committee of Yen Lac district

No	Project name	Investment location	Objective, scale of investment	Investment capital (expected)		Expected investment form	Estimated progress	Contact
				Million USD	Billion VND			
Domestic water supply								
1	Inter-commune domestic water supply facility in Ba Hien and Thien Ke communes, Binh Xuyen district	Binh Xuyen district, Vinh Phuc	Objectives: meet people's need, refresh environment, reduce diseases, ensure people's health, contribute in boosting socio-economic development; Expected daily capacity of 2,500 cubic meters		50.0	PPP, ODA	1-3 years	Department of Agriculture and Rural Development
2	Inter-commune domestic water supply facility in Dao Duc and Tan Phong communes	Binh Xuyen district, Vinh Phuc	Objectives: meet people's need, refresh environment, reduce diseases, ensure people's health, contribute in boosting socio-economic development; Expected daily capacity of 2,500 cubic meters		50.0	PPP, ODA	1-3 years	Department of Agriculture and Rural Development
3	Inter-commune domestic water supply facility in Dong Ich and Tien Lu communes, Lap Thach district	Lap Thach district, Vinh Phuc	Objectives: meet people's need, refresh environment, reduce diseases, ensure people's health, contribute in boosting socio-economic development; Expected daily capacity of 3,000 cubic meters		54.0	PPP, ODA	1-3 years	Department of Agriculture and Rural Development
4	Inter-commune domestic water supplyfacility in Duy Phien, Hoang Lau and Hoang Dan communes, Tam Duong district	Tam Duong district, Vinh Phuc	Objectives: meet people's need, refresh environment, reduce diseases, ensure people's health, contribute in boosting socio-economic development; Expected daily capacity of 4,500 cubic meters		92.0	PPP, ODA	1-3 years	Department of Agriculture and Rural Development
5	Domestic water supply facility in Van Hoi commune, Tam Duong district	Tam Duong district, Vinh Phuc	Objectives: meet people's need, refresh environment, reduce diseases, ensure people's health, contribute in boosting socio-economic development; Expected daily capacity of 1,000 cubic meters		20.0	PPP, ODA	1-3 years	Department of Agriculture and Rural Development

No	Project name	Investment location	Objective, scale of investment	Investment capital (expected)		Expected investment form	Estimated progress	Contact
				Million USD	Billion VND			
Domestic water supply								
6	Domestic water supply facility in Tho Tang commune-level town, Vinh Tuong district	Vinh Tuong district, Vinh Phuc	Objectives: meet people's need, refresh environment, reduce diseases, ensure people's health, contribute in boosting socio-economic development; Expected daily capacity of 2,000 cubic meters		30.0	PPP, ODA	1-3 years	Department of Agriculture and Rural Development
7	Safe water plant for 12 communes in Yen Lac district (those without any safe water plants yet)	Yen Lac district, Vinh Phuc	Safe water supply for citizens in 12 communes		180.0	PPP, ODA	2016-2020	People's Committee of Yen Lac district
8	Water distribution pipeline for Phuc Yen town's residential area	Phuc Yen town, Vinh Phuc	Building transmission pipeline of safe water around the town		45.0	PPP, ODA	1-3 years	Phuc Yen town
Transport relating projects								
1	The road along Tam Dao piedmont marked from Tay Thien, Tam Dao district to Tam Son, Song Lo district (QL2C - Tam Son)	Tam Dao and Song Lo district, Vinh Phuc	Aim to connect three satellite urban bunches of Vinh Phuc province; connect Phuc Yen town's eco-tourism complex with Tay Thien and Tam Dao spritual tourism complexes		850.0	PPP	3-5 years	Department of Transport
2	A road from the South of Vac lake to Trung Ha brigde and Ha Noi	Yen Lac district, Vinh Phuc	Contribute in boosting local socio-economic development		2,500.0	PPP	3-5 years	Department of Transport
3	People's Committee office of Tien Chau commune - Nam Viem road (through railway)	Phuc Yen town, Vinh Phuc	Length: 5km, width: 46m		1,023.0	PPP	3-5 years	People's Committee of Phuc Yen town

No	Project name	Investment location	Objective, scale of investment	Investment capital (expected)		Expected investment form	Estimated progress	Contact
				Million USD	Billion VND			
Transport relating projects								
4	Railway overbridge on Nguyen Tat Thanh street, Vinh Yen city (Km 55+200 of Yen Vien - Lao Cai railway)	Vinh Yen city, Vinh Phuc	Level crossing between Nguyen Tat Thanh road and Yen Vien-Lao Cai railway, meeting grade-II urban criteria and orienting to core urban position of Vinh Phuc city's construction plan, ensuring traffic safety.		300.0	PPP	3-5 years	Department of Transport
5	Thanh Van - Quan Tien - Vinh Yen bypass road (ringroad 2, Vinh Yen city)	Tam Duong district, Vinh Phuc	Complete transport system of Vinh Phuc approved urban technical infrastructure framework, meeting grade-II urban criteria and orienting to core urban position of Vinh Phuc city's construction plan		1,000.0	PPP	3-5 years	Department of Transport
6	Duc Bac bridge on 306 road	Song Lo district, Vinh Phuc	Complete the approved transport plan, meet the increasing pass-over -Lo river transport demand, connect Vinh Phuc and Phu Tho, promoting local socio-economic development		900.0	PPP	3-5 years	Department of Transport
7	Tam Dao - Dai Lai road (along Tam Dao piedmont)	Tam Dao district, Vinh Phuc	Connect the province's key tourism parks: Dai Lai, Tam Dao, Tay Thien Natural Scenic Bbeauty and Truc Lam Monastery		1,500.0	PPP	3-5 years	Department of Transport
8	Road 2C - West Hop Hoa commune-level town	Tam Duong district, Vinh Phuc	Length: 6.8 km, total paved width = 26m (Travel lane width =15m, Separator =2m, Paved Shoulder width =2x4.5m);		364.0	PPP	3-5 years	People's Committee of Tam Duong district

No	Project name	Investment location	Objective, scale of investment	Investment capital (expected)		Expected investment form	Estimated progress	Contact
				Million USD	Billion VND			
List of health care, eductional and tourism projects								
1	High-quality health care centre under Phuc Yen General Hospital	Phuc Yen town, Vinh Phuc	Area: 3000 m² with 200 hospital beds		128.0	PPP	1-3 years	Department of Health
2	International standard-based foreign language and high-quality vocational training centre	Urban zone of Ha Tien Pagoda, Vinh Yen city, Vinh Phuc	Aim to teach internationally standardized English, Japanese, Korean and Chinese; Labor Law's supporting subjects; working style in industrial manner; labor hygiene and safety and several high-tech skills serving enterprises. Area: 6,675 m², 8 floors, 32 rooms; expected learners: 600		100.0	PPP, 100% FDI	1-3 years	Department of Labour, War Invalids and Social Affairs
3	Vocational school	Yen Lac district, Vinh Phuc	Scale: 2 ha		50.0	100% FDI	2016-2020	People's Committee of Yen Lac district
4	Eco-tourism complex in Khanh lake	Yen Lac district, Vinh Phuc	Building resorts with a scale: 100 ha		200.0	100% FDI	2016-2020	People's Committee of Yen Lac district
	Total	42		885,0	14,750.0			



MAP OF VINH YEN CITY





TL 302C

Nguyen Tat Thanh

National College

Truong Quan Chinh

Quan Chinh

Lien Minh

Linh



Quan Chinh

Nguyen Tat Thanh

Phan Boi Chau

Ngo Gia Tu

Trai Giao

Phan Chu Chinh

Private general Medical Clink

Thanh Gia

CoopMart Plaza



Viet Duc Financial Buiding



Vinh Phuc Opera House and Square

QL 2

Hai Ba Trung

Khai Quang Police Station

QL 2



Nguyen Tat Thanh

Hai Ba Trung

Khai Quang IP

Khai Quang Industrial Park

Ly Thai To

Hai Ba Trung

Khai Quang Lake

Me Linh

Vinh Thinh

Administration Area

An Dinh

Dinh Am

QL 2

Mau Thong

BiG C Vinh Phuc



QL 2

South Vinh Yen Golf New Urban Japanese Restaurant

Main road of south Vinh Yen Urban Area

- 1 Hai Luu Buffalo Festival
- 2 Hai Luu Stork Garden
- 3 Hai Luu Stone Village
- 4 Bay Water-fall - Sang Mountain
- 5 Binh Son Ancient Tower
- 6 Nhu Thuy Port
- 7 Trieu Xa Bamboo Rattan Village
- 8 Tho Tang Trade Village
- 9 Ly Nhan Black Smith Village
- 10 Bich Chu Wooden Sculpture Village
- 11 Vinh Thinh Port
- 12 Ho Chi Minh Menorial House
- 13 Dam Vac North
- 14 Vinh son Snake Village
- 15 Dong Dau Monument
- 16 Green Abyss
- 17 Tam Dao National Garden
- 18 Tam Dao Golf Course
- 19 Vinh Phuc Museum
- 20 Dam Vac South Golf Course
- 21 Huong Canh Ceramic Village
- 22 Thanh Lang Wooden Sculpture Village
- 23 Revolutionary Region
- 24 Thanh Lanh - Ngoc Boi
- 25 Flaingo Dai Lai Resort
- 26 Dai Lai Golf Course
- 27 Hien Le Ceramic Village

- 49 Bo Lac Lake
- 50 Van Truc Lake
- 51 Vinh Thanh Lake
- 52 Dung Lake
- 53 Bon Bot Stream
- 54 Ban Long Waterfall
- 55 Lang Ha Lake
- 56 Xa Huong Lake
- 57 Thanh Lanh Lake
- 58 Dai Lai Lake
- 59 Thi Mong Lake
- 60 So Lake
- 61 Tich Quang Lake
- 62 Lo River
- 63 Red River
- 64 Ca Lo River
- 65 Phan River
- 66 Pho Day River






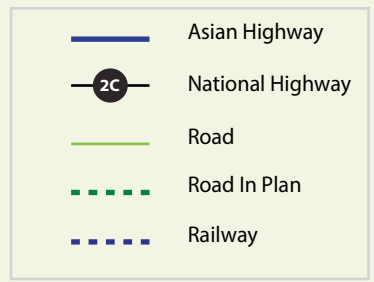
Temple, Pagoda

- 28 Tran Nguyen Han Temple
- 29 Duong Temple
- 30 Tho Tang Temple
- 31 Bich Chu Temple
- 32 Dong Dao Temple
- 33 Tung Van Pagoda
- 34 Dai An Pagoda
- 35 Yen Lac Temple
- 36 Tranh Temple
- 37 Thinh Temple
- 38 Hoa Duong Pagoda
- 39 Tay Thien Upper Temple
- 40 Tay Thien Monastary
- 41 Chan Suoi Temple
- 42 Ha Tien Pagoda
- 43 Phu Pagoda
- 44 Quat Luu Temple
- 45 Kinh Phuc Pagoda
- 46 Tam Canh Temple
- 47 Xuan Lang Temple
- 48 Quang Huu Pagoda

Moutain

- 67 That Moutain
- 68 Sang Moutain
- 69 Hinh Nhan Moutain
- 70 Tam Dao Moutain
- 71 Da Trang Moutain
- 72 Con Trau Moutain
- 73 Ba Tuong Moutain
- 74 Loc Hien Moutain

 Japanese Restaurant



CONTACT AGENCY FOR INVESTMENT PROMOTION AND SUPPORT

Vinh Phuc Investment Promotion Agency (IPA Vinh Phuc)

Address: Headquarter of Provicnial People's Council and People Committee No 38-40 Nguyen Trai Street,
Dong Da Ward, Vinh Yen City, Vinh Phuc province, Vietnam.

Tel: +84 211 3616 618 – Fax: +84 211 3616 018

Website: ipavinhphuc.vn

Email: ipa@ipavinhphuc.vn